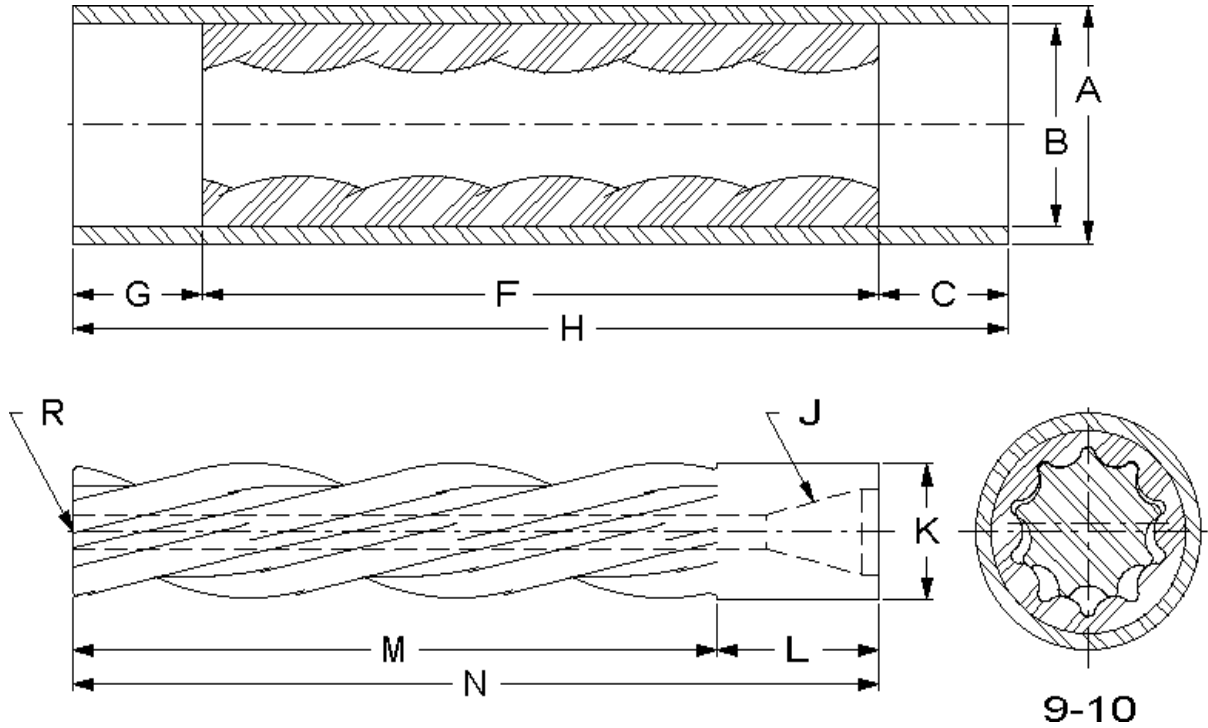


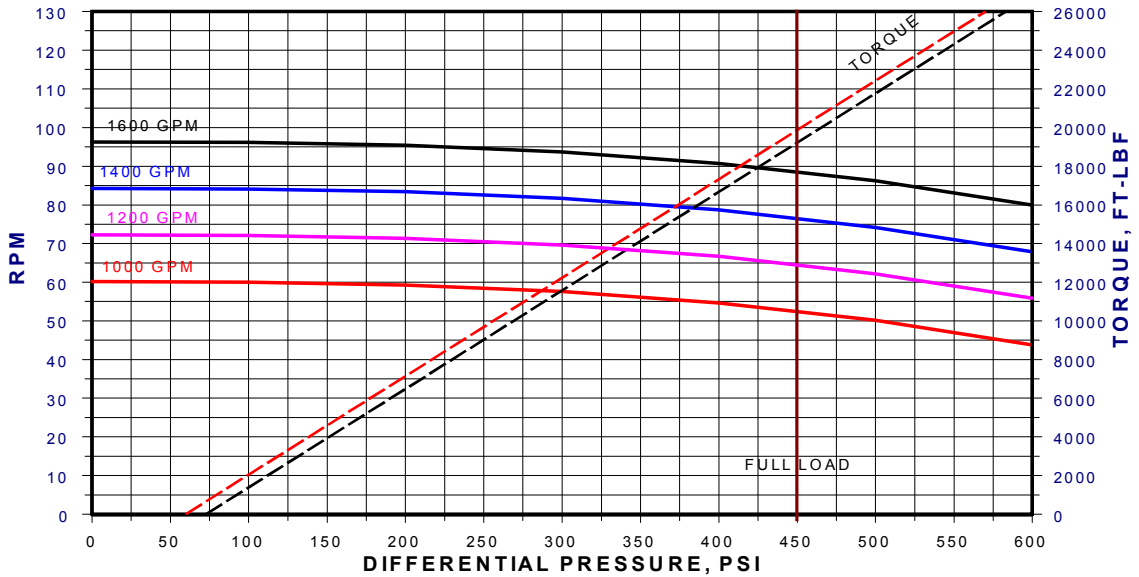
# 12-3/4" 3 STAGE 9/10



A	B	C	F	G	H	M	N	L	K	R	J
12-3/4	10-3/4	12	112	12	136	114	122	8	6	—	—

	STD	APPROX STALL TORQUE	55000 FT-LBF
STATOR MAJOR DIAMETER	10.248	ROTOR ECCENTRICITY	.427
STATOR MINOR DIAMETER	8.540	ROTOR WEIGHT	2135 LBS
ROTOR MAJOR DIAMETER	9.404	STATOR WEIGHT	1430 LBS

## PERFORMANCE DATA



1275S9030